



Onboarding for Veeam Backup *for Microsoft 365*



Tyson Fewins

Customer Onboarding Architect



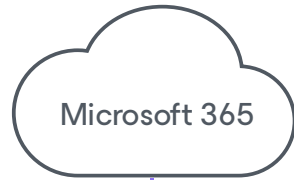
Jason Trier

Sr. Customer Onboarding Engineer

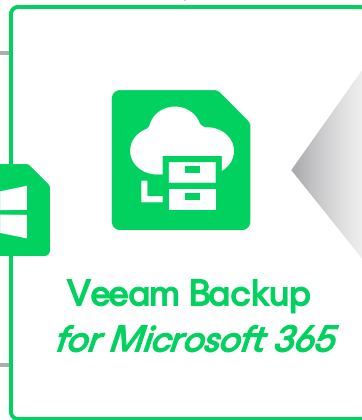
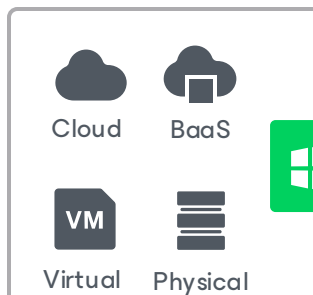
Veeam Backup for Microsoft 365 Components



Exchange Online
OneDrive for Business
SharePoint Online
Microsoft Teams

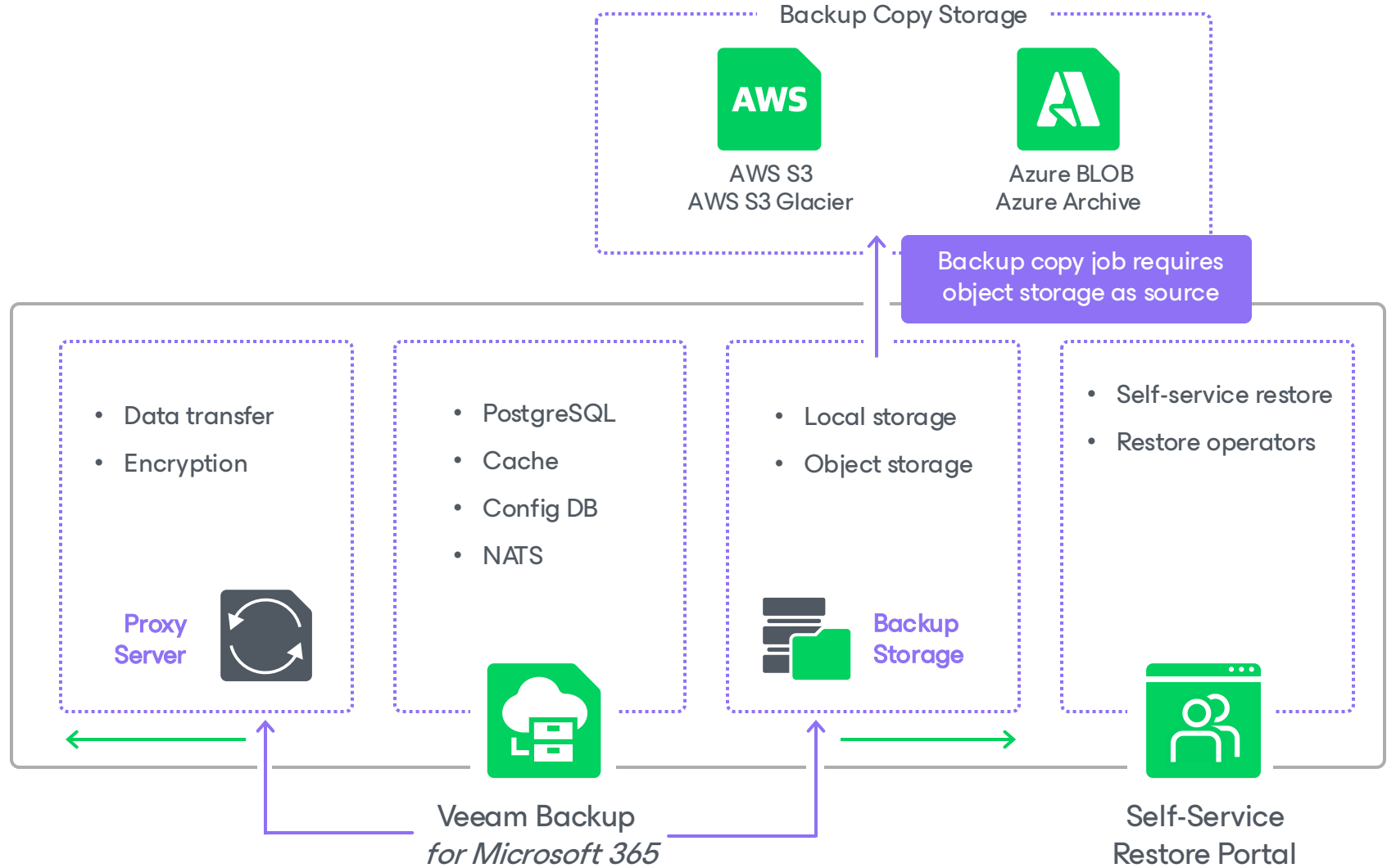


Microsoft 365



Veeam Backup
for Microsoft 365

Exchange
SharePoint



Product architecture

Centralized
PostgreSQL database

- PostgreSQL Configuration Database
- PostgreSQL Cache Database (Metadata)
- ❖ Local cache sizing is 1% of protected data



Product architecture

NATS server (with JetStream engine)



Builds processing queues



Maintains a variety of operational streams, i.e.:

- Job changes queue
- Job control queue
- Session event stream
- Orchestration stream
- Processing stream, etc.

Access control

- Supported for both users and groups
- No more need for Local System Admin privileges
- Veeam Backup Administrator role
- MFA logon
- Works for both VB365 Console and Veeam Explorers



Immutable backups

Supported for any object storage of your choice.

Uses native Object Lock capabilities.

Immutability period:

- Set in days (less than retention period)
- Can be increased after initial configuration

Governance mode (Storage dependent).

Retention period:

Can be increased on an immutable repository after initial configuration



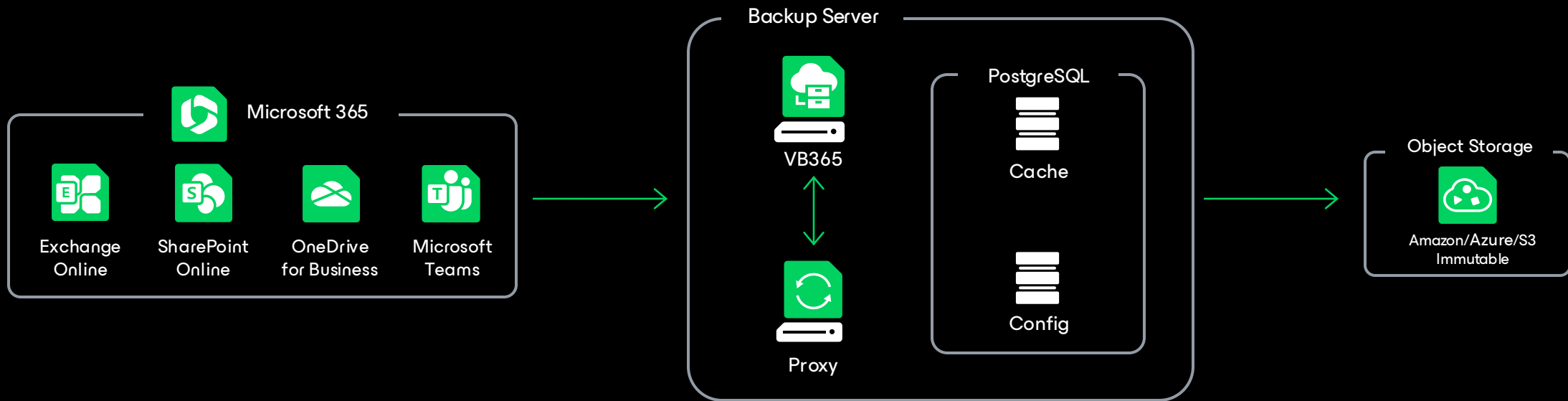
Immutability Options Comparison

Object Storage Repository Settings:

	Primary Backup	Backup Copy
Governance mode (optional)	Yes	Yes ^{NEW}
Immutability period = retention period	Yes	Yes
Extend retention period	Yes	No
Immutability period less than retention period (set in days)	Yes (snapshot-based retention only)	No
Extend retention period	Yes	N/A
Extend immutability period	Yes	N/A

All-in-one

Simple Deployment - 1000 Users



Job Design

Job	Service	Repository	Group
Job-Mail	Mail	ObjectRepo01	Entire Org (Service: Mail+Archive)
Job-Onedrive	OneDrive	ObjectRepo01	Entire Org (Service: OneDrive)
Job-SP	SharePoint	ObjectRepo01	Entire Org (Service: Sharepoint)
Job-Teams	Teams	ObjectRepo01	Entire Org (Service: Teams)

Multiple Repositories

A Proxy Pool can manage multiple repositories. (Data Usage Metrics)

SP and Teams Data

Make sure to point Sharepoint and Teams Jobs to the same Repository. (Duplicate Data)

Environment Sizing

The screenshot displays the Veeam Calculator - VB365 interface. The top navigation bar includes a home icon, the title "Calculator - VB365", and tabs for "Data Center", "SaaS", "Public Cloud", and "Monitoring". The "SaaS" tab is selected. Below the navigation bar, there are tabs for "M365" and "SFDC". The "M365" tab is active, and the "Advanced" toggle is turned on. The interface is divided into three main sections: Mailboxes, Archive Mailboxes, and OneDrive. Each section contains input fields for Mailboxes, Source data, Weekly change rate, and Retention, with dropdown menus for units and options.

Category	Mailboxes	Archive Mailboxes	OneDrives
Mailboxes	10 objects	0 objects	0 objects
Source data	1 TiB	0 TiB	0 TiB
Weekly change rate	0.5% (Low, Avg, High)	0.5% (Low, Avg, High)	2% (Low, Avg, High)
Retention	30 dailies (3Y, 5Y, 7Y)	30 dailies (3Y, 5Y, 7Y)	30 dailies (3Y, 5Y, 7Y)

<https://www.veeam.com/calculators/simple/saas/m365>

Backup proxy pools

- Deliver enterprise scalability and easier management
- Process **both backups and restores**
- Designed to work with object storage
- Support Windows and **Linux** proxies
- Proxy on Linux:
 - For object storage only
 - RHEL / Ubuntu



Backup proxy pools

Provide automated **load balancing**:

By CPU/RAM:

- Default limit of 64 objects per proxy processor
- Check for the average CPU/RAM usage every 10 minutes
- The number of processed objects is adjusted according to CPU/RAM load

Throttling-based balancing:

- Control of the number of objects issued for processing
- Check throttling every 10 minutes
- Increase the number of processed objects if no throttling

Proxy pools

How it works

Processing:

- Job objects are distributed between multiple proxies
- Processing priorities (may change in GA):
 1. Restore
 2. Incremental backup
 3. Full backup

Rebalancing:

- Jobs and job objects are periodically redistributed between proxies for better performance:
 1. By proxy availability (proxy goes offline / proxy goes on maintenance / new proxy added / proxy removed)
 2. By timer
 3. After restart of the controller
 4. After a new job is added (least loaded proxy is assigned)

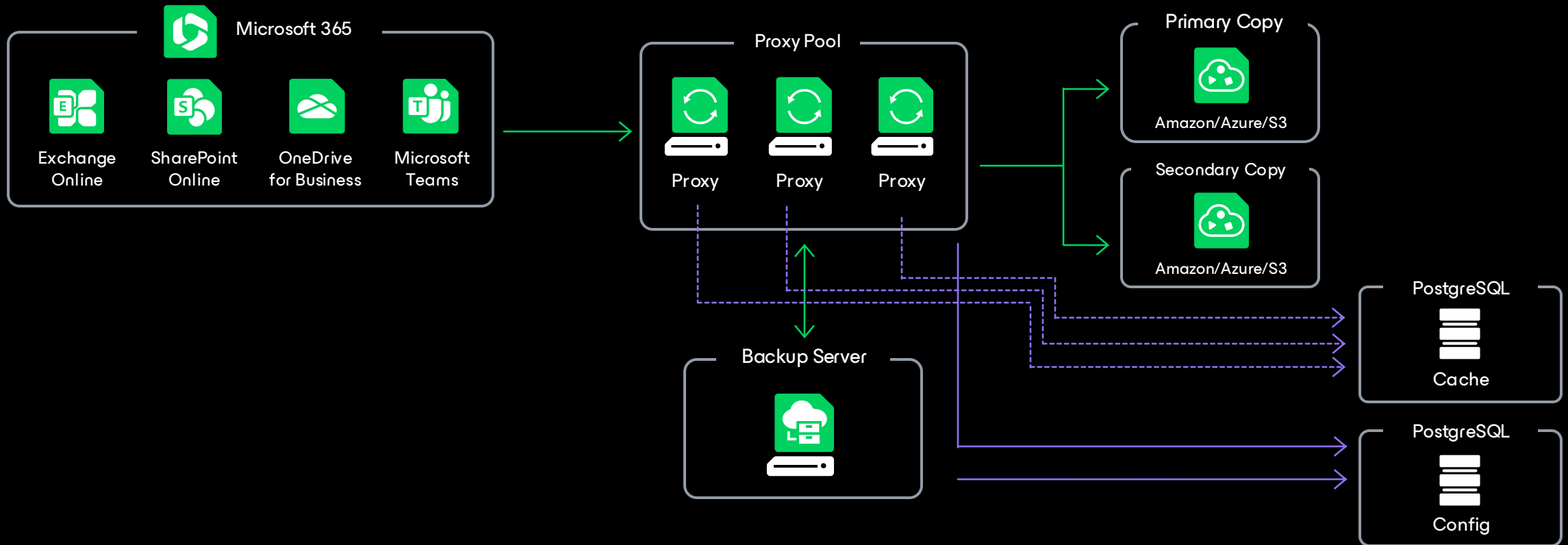
Custom service account for proxies

- Proxy can run under a custom service account (vs LocalSystem on Windows)
- Supported for both Windows and Linux
- Use an existing account or create a new one



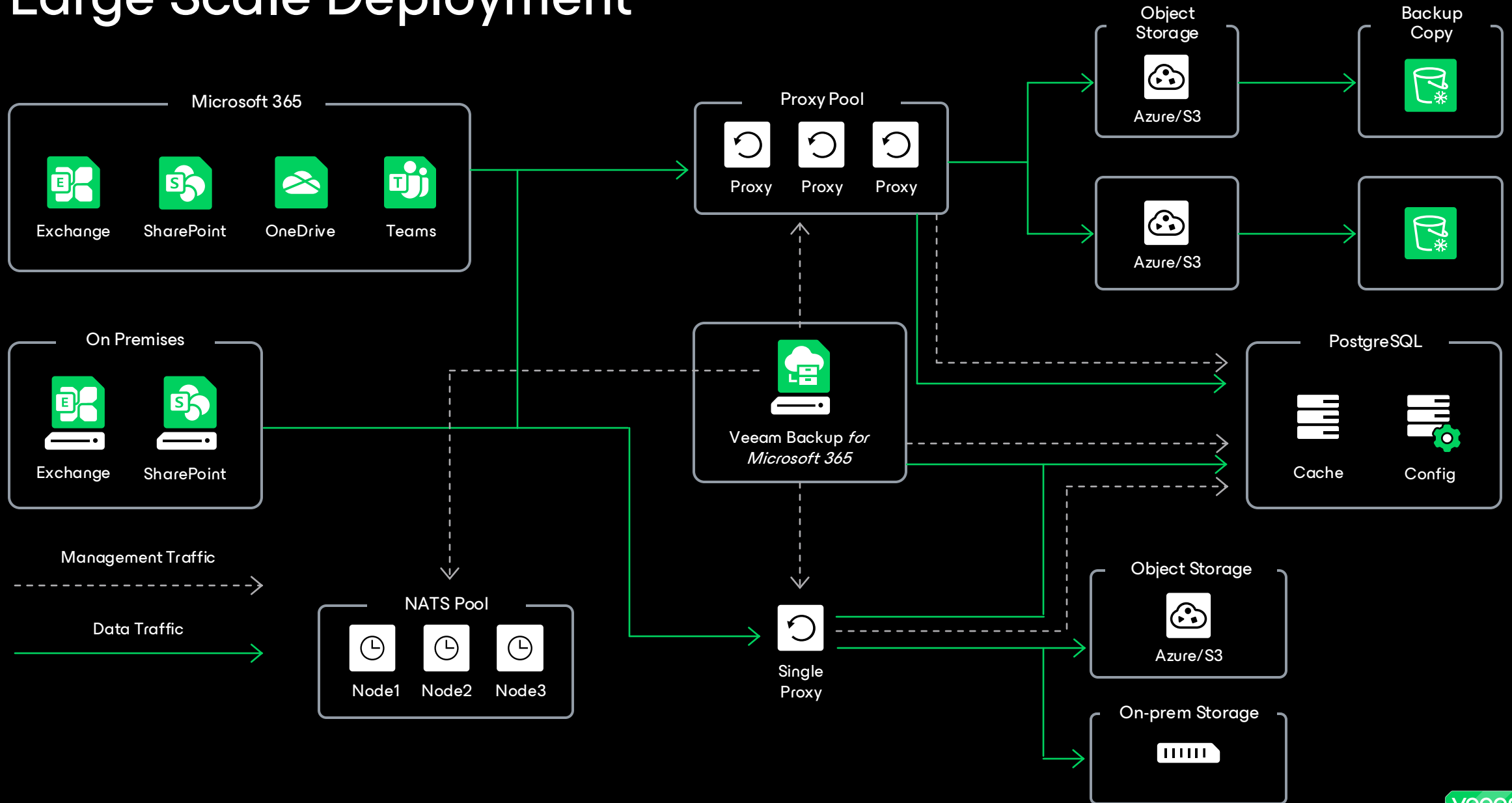
Mid-Size

Distributed Deployment



DEMO

Large Scale Deployment



Take-aways

BP Guide — <https://bp.veeam.com/vb365>

Veeam University —
<https://www.veeam.com/free-on-demand-trainings.html>

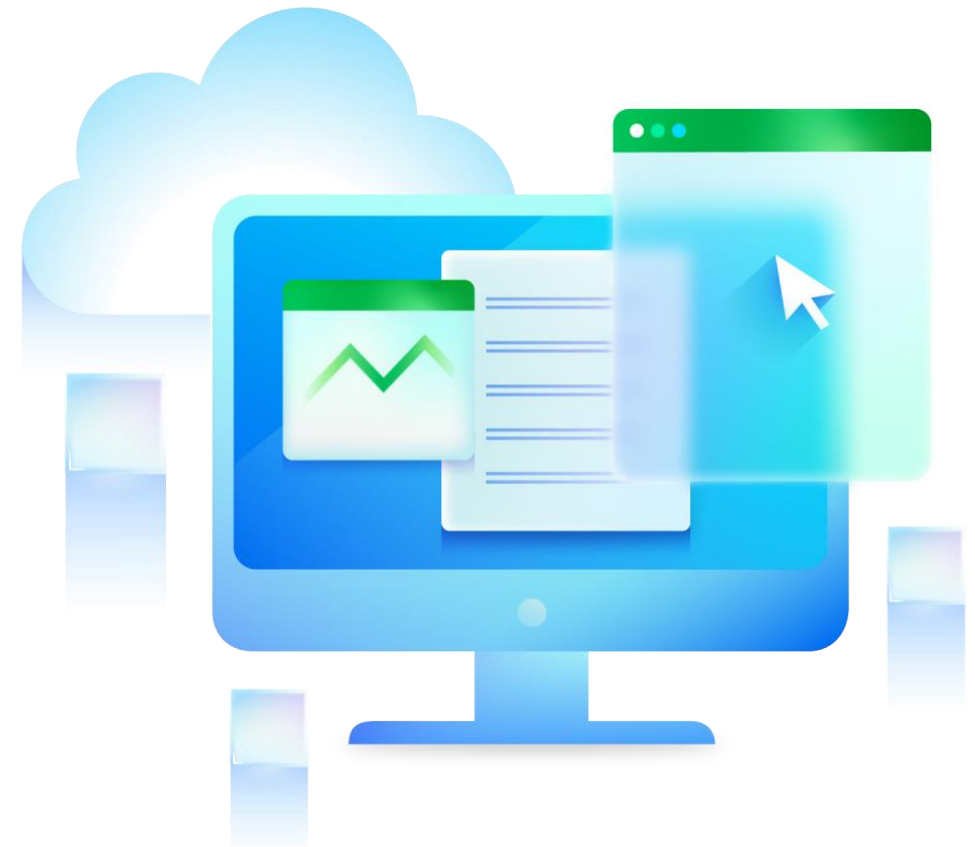
KB: <https://www.veeam.com/knowledge-base.html>

Sizing Calculator —
<https://www.veeam.com/calculators/simple/saas/m365>

Remember EWS Throttling
<https://www.veeam.com/kb4198>

Need help? Contact us at:
veeam.customersuccess.onboarding@veeam.com

Questions?



Veeam Data Cloud

for Microsoft 365

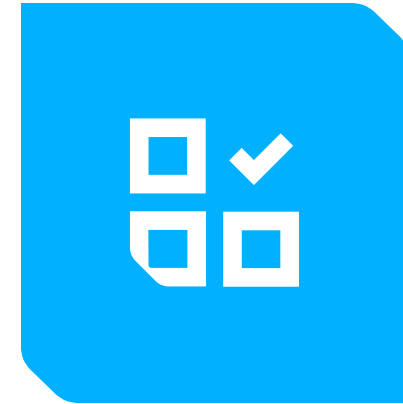
Resilient Data Protection Made Simple for Microsoft 365



Trusted, industry-leading technology



Modern, secure and intuitive



Everything is included

NEW! Now powered with Microsoft 365 Backup Storage!

Everything is included

Software, backup infrastructure and unlimited storage bundled together with ongoing maintenance covered by the experts

Veeam Data Cloud for Microsoft 365

Veeam-managed service delivery

Core components



Veeam Server



Proxies



Unlimited storage

Operations



Networking



Infrastructure management



Maintenance

Automation



Updates



Patches



Network security

User-controlled

Backup



Create backup jobs

Restore



Recover quickly & easily

eDiscovery



Advanced search and find

Optional configuration:

Backup Operations

- Customize your backup
- Alter retention period
- Storage region of your choice

Security

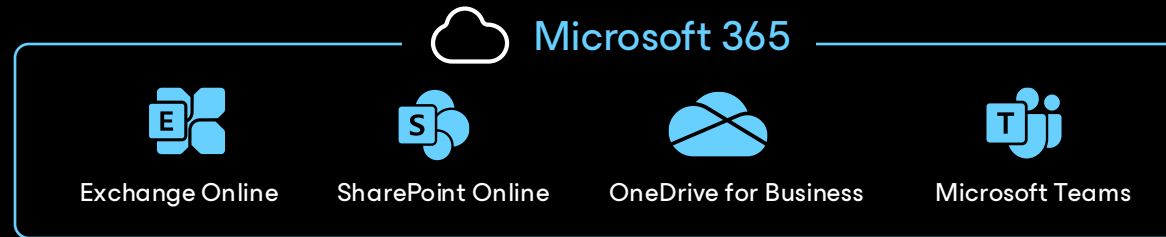
- Role Based Access Control
- Restrict access by IP range
- Diversify storage repositories

Analytics

- Generate reports
- Manage licenses & monitor activity
- Export logs to SIEM

The future of Microsoft 365 Backup Storage

Microsoft's backup solution is embedded inside Veeam's Microsoft 365 Backup Service, giving customers the best of both worlds - Speed and scale meets control and flexibility



Veeam Data Cloud for Microsoft 365 Premium

Veeam Data Cloud for Microsoft 365

Express



Fast Backup of Initial M365 Tenant



Bulk restore



Cyber attack recovery



Data stored inside Microsoft security boundary

Powered by Microsoft 365 Backup Storage

Veeam Data Cloud for Microsoft 365

Flex



Data separation and security



Flexible, granular restore



Customizable backups



Support for Teams



Advanced search



Exit strategy



Data stored in location of your choice

Each backup is a separate, independent backup method embedded inside of Veeam's M365 backup solution.

Matt Elsberry
Lead Network Administrator, SGM Health

Share Your Veeam Success Story

- Feature on our website and social channels
- Speaking opportunities at VeeamON
- Showcase your expertise within the community
- Get KUDOS for your accomplishments.

Interested? Reach out to us at

advocacy@veeam.com



The Veeam logo is centered on a green background. It consists of the word "veeam" in a white, lowercase, sans-serif font. The text is contained within a white-outlined rectangular box with rounded corners and a notch on the right side. Behind the box, there are two large, semi-transparent, light green shapes that resemble stylized arrows or chevrons pointing towards each other.

veeam

Follow us!



Join the community hub:

